

E80

Experimental Engineering



Lecture 3

LabView

ni.com/labview



NATIONAL INSTRUMENTS

LabVIEW™ 2012

Jan. 26, 2016

Christopher M. Clark

Confidence in Measurements



https://www.youtube.com/watch?v=wO25_xrijLo



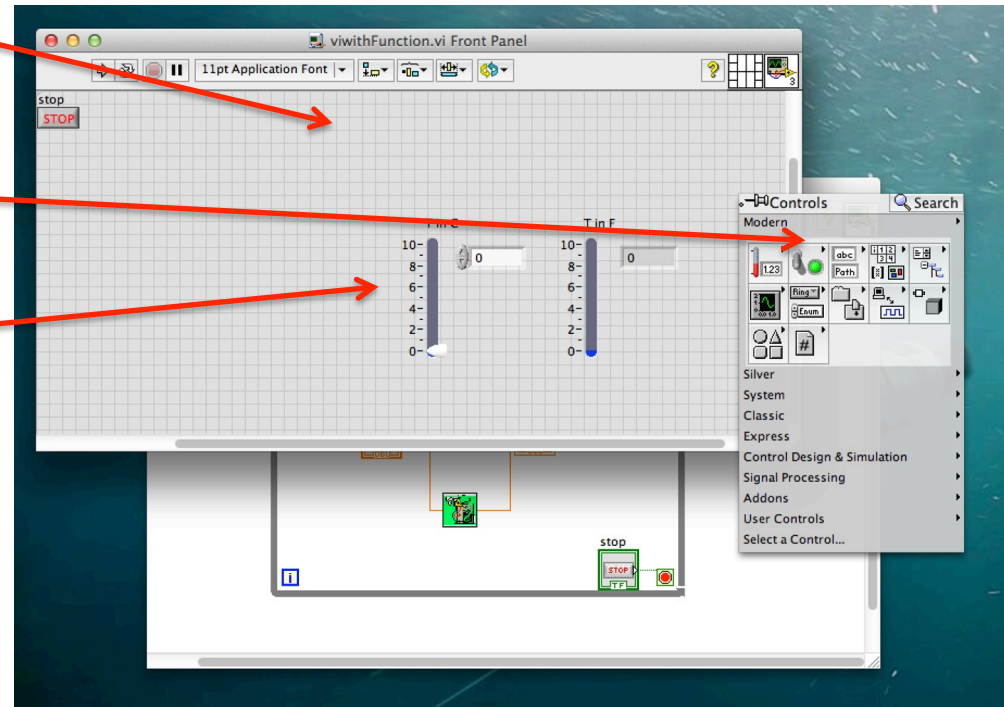
LabView

- VI – Virtual Instrument
 - Computer Controlled Data Acquisition
 - Contains two parts:
 1. Front Panel (GUI)
 2. Block Diagram (graphical programming)

LabView

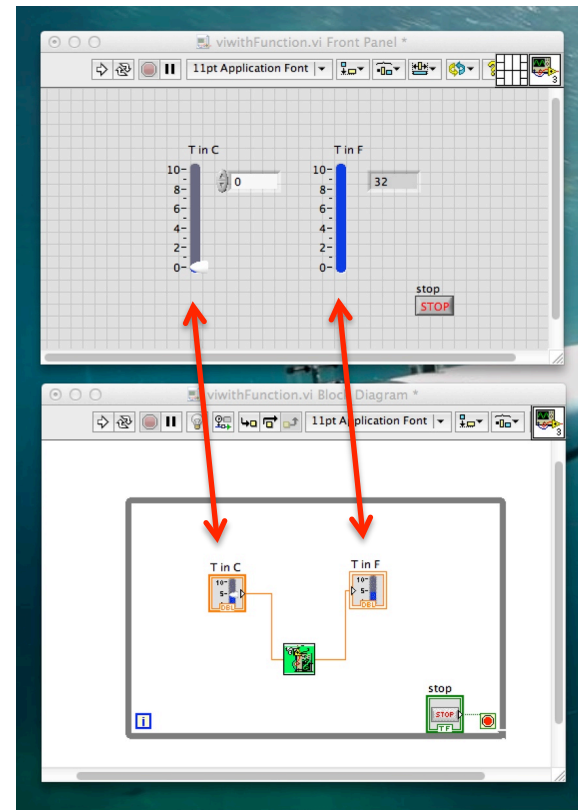
■ Front Panel

- Right click to get the *controls palette*
- Insert items
- Items can be either:
 - Controls
 - Indicators



LabView

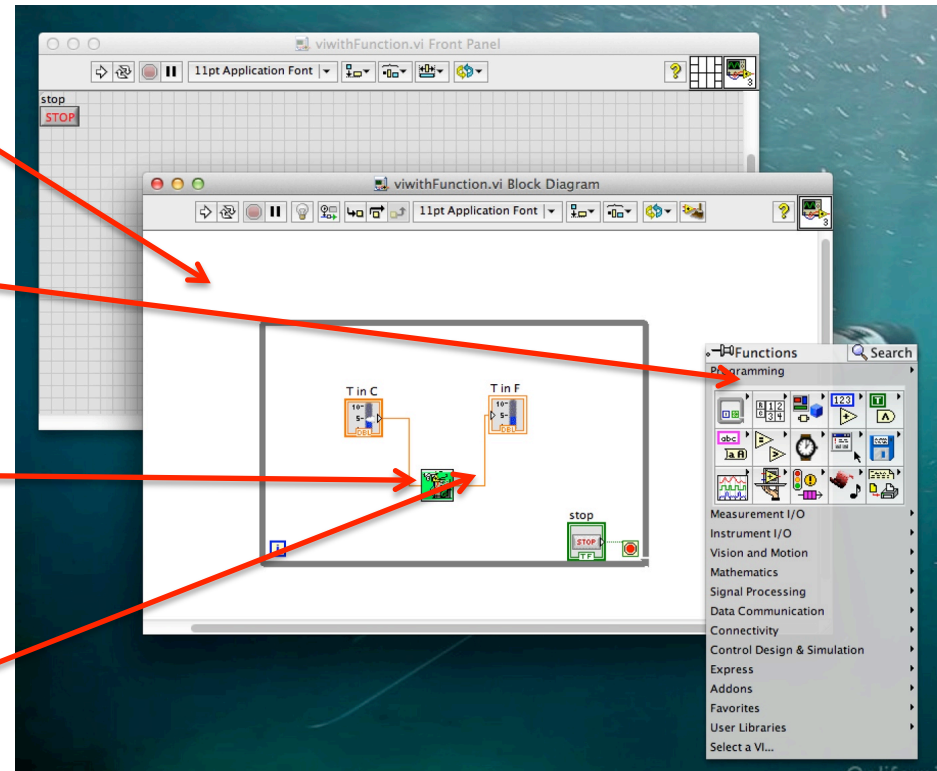
- Front Panel vs. Block Diagram
 - Items on the Front Panel have corresponding terminals in the Block Diagram





LabView

- Block Diagram
 - Right click to get the *functions palette*
 - Insert programming *functions*
 - Use *wires* to connect terminals and functions



E80

Experimental Engineering



LabView

Lets Practice!

LabView

- The MyDaq





LabView

- LabView Notes:
 - LabView assignments are individual
 - Watching the NI videos are VERY helpful

- Other Notes:
 - Please don't submit more than one **lab** per group